

Questions per Station

- 1) How many different university logos are there on the signs?
- 2) How many transitions does a drop of water go through (arrows in Figure 1)?
- 3) What percentage of the earth's water supply is fresh water?
- 4) How big is the area of the catchment area (in km²) of Lake Lunz?
- 5) How many experimental systems are mentioned by name in the text?
- 6) When was the biological station founded?
- 7) How many adult caddis flies does Figure 1 show?
- 8) How many points for environmentally friendly behavior are listed?
- 9) How many days did Lake Lunz have closed ice cover in the winter of 2006/07?
- 10) What is the number of the process in which oxygen is inhaled in Figure 1?
- 11) How often do you see the group of decomposers (Destruenten) in Figure 1?
- 12) How many different fish species does Figure 1 show?

Answer these 12 questions and find Lunzi!

Each answer delivers a number either directly or after a small math problem. Enter these numbers at the bottom as the GPS coordinates (answer number 1 on the line with 1 below). Make your way to these GPS coordinates and find Lunzi. There you can also enter yourself in the logbook and post your letter (cut at ✂).

Answers per Station

- 1) _____ + 1 = _____
- 2) _____ + 3 = _____
- 3) _____ x 2 = _____
- 4) _____ - 24 = _____
- 5) _____ - 1 = _____
- 6) _____ - 1900 = _____
- 7) _____ - 1 = _____
- 8) _____ + 1 = _____
- 9) _____
- 10) _____
- 11) _____
- 12) _____

Enter the results here:

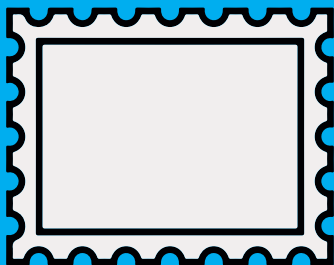
$\frac{\quad}{1} \frac{\quad}{2} \overset{\circ}{\quad} \frac{\quad}{3} \frac{\quad}{4} \overset{\prime}{\quad} \frac{\quad}{5} \frac{\quad}{6} .6'' \text{ N}$

$\frac{\quad}{7} \frac{\quad}{8} \overset{\circ}{\quad} \frac{\quad}{9} \frac{\quad}{10} \overset{\prime}{\quad} \frac{\quad}{11} \frac{\quad}{12} .6'' \text{ E}$



To

Lunzi
Am See 1
3293 Lunz am See



Dear Lunzi,

Tell Lunzi your opinion:

Please check

How did you like the tour with Lunzi?



Was the tour informative?



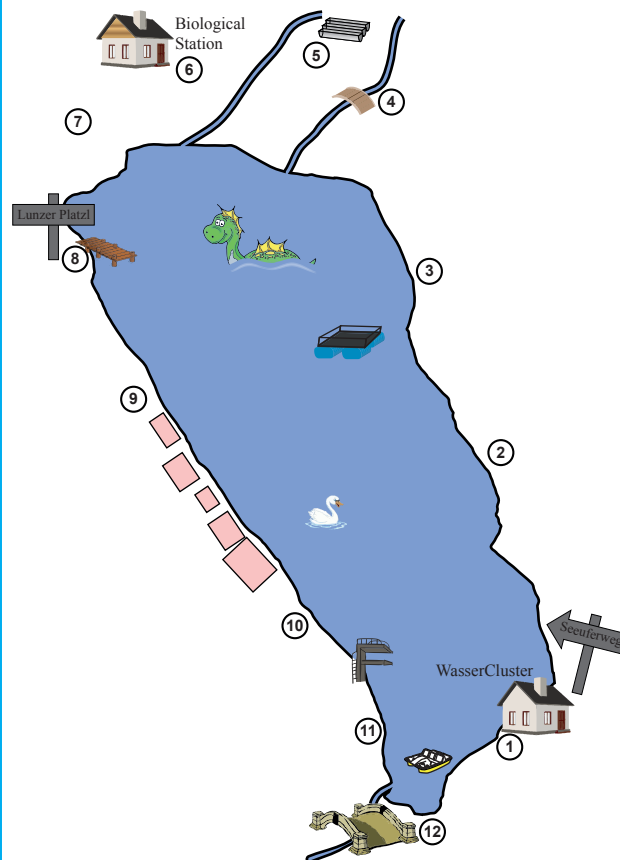
Would you recommend Lunzi to others?



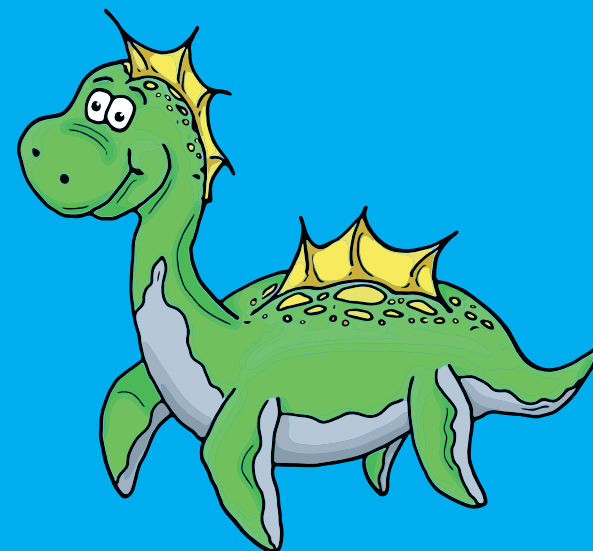
How do you find Lunzi?

The BioGeocaching - Find Lunzi loop is a scavenger hunt. By answering the questions, you will figure out GPS coordinates that will lead you to Lunzi's hiding place. You can find the questions on the inside of this brochure. If you follow the route around the lake below, you will come across various information boards with the answers. For each station and question you will receive a digit of the GPS coordinates you are looking for. Once you have read all the signs and answered the questions, make your way to the GPS coordinates and find Lunzi!

The route



BioGeocaching Find Lunzi



Discover the treasures of nature and learn about the work of researchers as you search for Lunzi.

